

At service of  
Public  
Companies

---

# Worldwide Agency for Institutional Affairs

We return the complexity at the problems

EU Headquarter : Rome – Italy - Eastern Europe Representative Office: Sloviansk – Ukraine  
West Balkans representative Office: Tirana – Albania - Research Lab: Belgrado - Serbia

# Who we are

**Worldwide**  
Agency for  
Institutional Affairs  
We return the complexity at the problems

WorldWide Agency for Institutional Affairs is a Branch of Worldwide company that combines the experience of older partners (who come from the most historic entrepreneurial realities such as Breda Spa, Tecnipetrol spa, Italferr, the Bambino Gesù Pediatric Hospital, Eni, etc. ) with the enthusiasm and desire to raise younger partners, without discrimination of gender, language, race or religion.

A specialized and multilingual team is assigned to each company activity.

WorldWide Agency for Institutional Affairs offers a broad range of consulting services, with the tools and expertise needed to grow clients' businesses.

We collaborate with our clients from start to finish, focusing on their needs, developing new ideas, developing effective strategies and designing high quality solutions.



# Our expertise

**Worldwide**  
Agency for  
Institutional Affairs  
We return the complexity at the problems

With the advent of the pandemic and the sudden change in geopolitical scenarios that are taking place, the role of companies that can assist public administrations and government agencies has radically changed. Until yesterday their role was to help them solve problems and/or carry out support activities that were not present or that had not emerged, today, however, their increasingly operational role of corporate properties the role of consultant has become that of "Counselor".

The Counselor is the one to ask for advice and/or indications on the paths to be taken independently in all sectors, from finance to management, from the interpretation of international scenarios to how to put them into practice.

This requires an increasingly global and no longer mono-sectoral but multidisciplinary competence of the «Counselor». To this end, the continuous training of the consultant comes into play both in his primary activity but also in other sectors.

The mono-thematic consultant is therefore destined to leave the world of work replaced by the company adviser.

It is precisely by virtue of this new trend that Worldwide intends to offer itself to public administrations and government agencies.



# In the past..

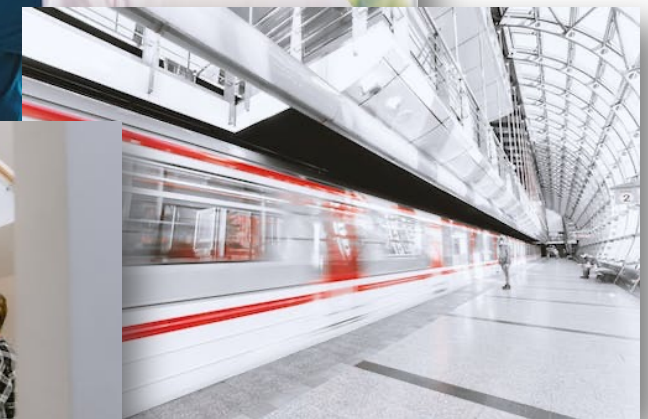
**Worldwide**  
Agency for  
Institutional Affairs  
We return the complexity at the problems

In the past, our experts have participated in numerous development and research projects in the fields of healthcare, industry and scientific research.

Past experiences through the "Sindone" project in Turin (Italy), an "Alzheimer's" project that involved Italian, Israeli, and North American realities, the organization for 4 years of the World Day of Quality in Health, the project of the High Speed of the Italian Railways and so on.

A wealth of experience that we make available to develop, implement and improve the processes of the institutions

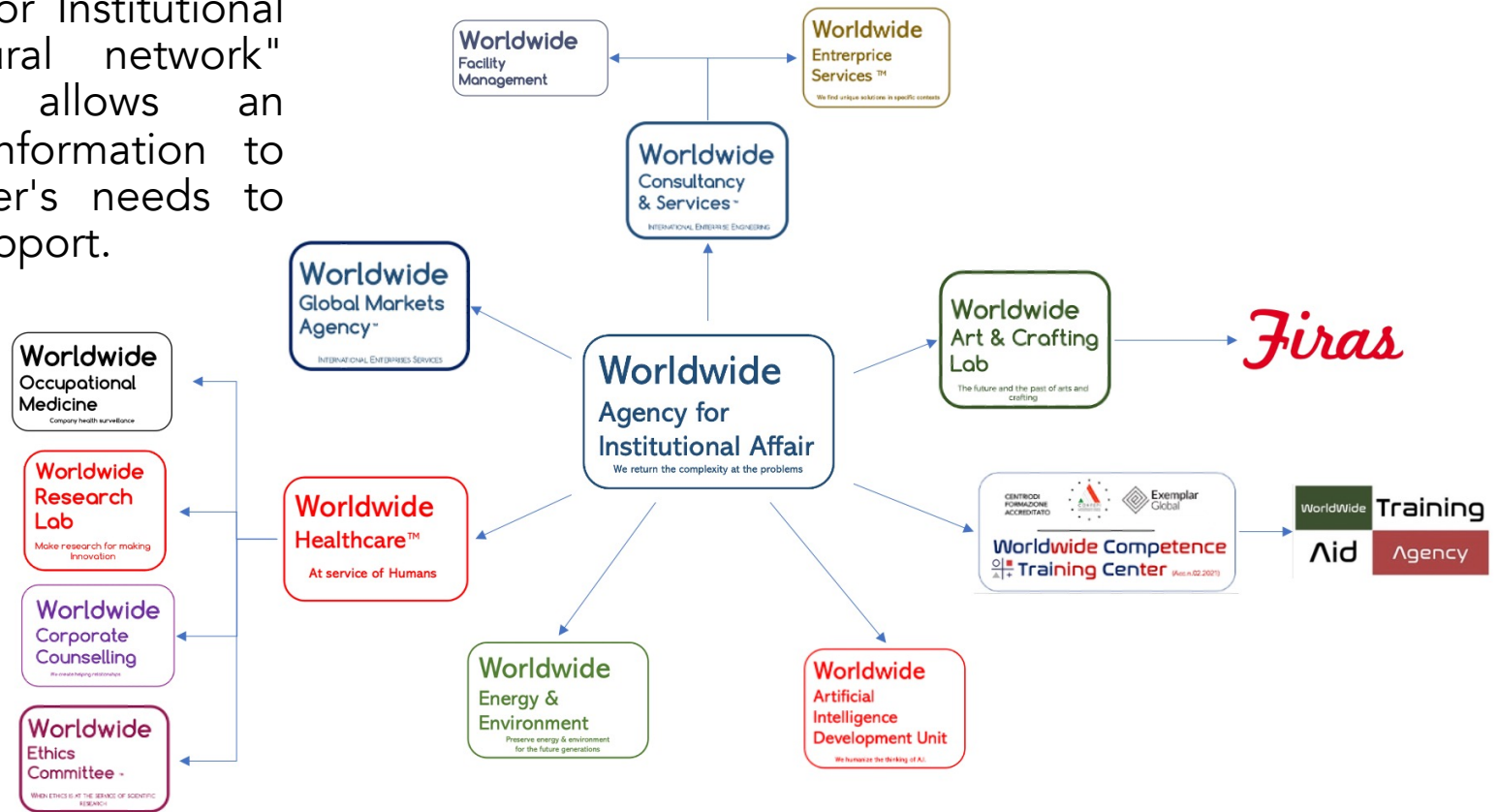
**Not just a consultant but a  
"Counselor".**



# A "Neural" network at the service of the institutions

**Worldwide Agency for Institutional Affair**  
We return the complexity at the problems

WorldWide Agency for Institutional Affair has a "neural network" organization that allows an interconnection of information to support the customer's needs to give him maximum support.





# A "Neural" network at the service of the institutions

**Worldwide  
Agency for  
Institutional Affairs**  
We return the complexity at the problems

## **Worldwide Healthcare™**

**At service of Humans**

- Development of public and private health projects
- Development of epidemiological observatories
- Development of clinical-management GMP-
- Development of public and private healthcare management projects
- Consultancy for the management of healthcare and scientific research facilities

## **Worldwide Research Lab**

Make research for making  
Innovation

- Development of bio-nano and micro technologies in the clinical setting
- Development of techniques for research on the use of phytotechnologies in the clinical setting

## **Worldwide Corporate Counselling**

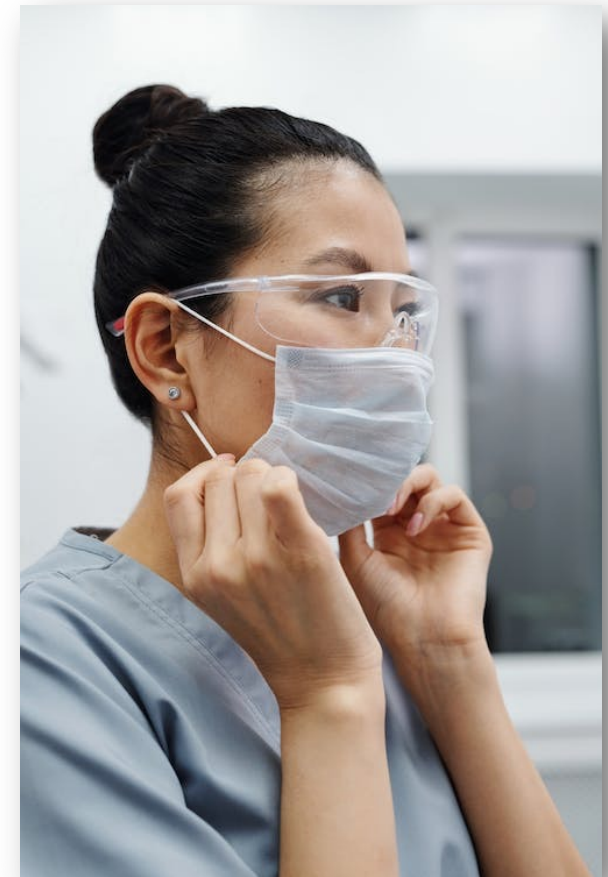
We create helping relationships

- Development of programs for the containment of burnout and post-event syndromes (war and/or natural)

## **Worldwide Occupational Medicine**

Company health surveillance

- Development of occupational health programs
- Development of health surveillance programmes



# A "Neural" network at the service of the institutions

**Worldwide  
Agency for  
Institutional Affairs**  
We return the complexity at the problems

**Worldwide  
Consultancy  
& Services™**

INTERNATIONAL ENTERPRISE ENGINEERING

**Worldwide  
Facility  
Management**

**Worldwide  
Entreprice  
Services™**

We find unique solutions in specific contexts

**STRATEGIC PLANNING** Do you want to develop your business but don't know where to start? Need help planning or implementing your next project? Let yourself be guided. Any business can improve with small incremental changes, but to thrive in the future in a fast-changing environment requires making smart decisions. **SPECIALISTS IN THE DESIGN, DEVELOPMENT AND IMPLEMENTATION OF BUSINESS MANAGEMENT SYSTEMS** • ISO 9001 Quality Management • ISO 13009 Beach management - Tourism and related services • ISO 14001 Environmental Management • ISO 45001 Health and Safety • ISO 27001 Information Security • ISO 22001 Food Safety • ISO 27001 Data security • ISO 37001 Prevention of corruption **SPECIALISTS IN THE RE-ENGINEERING OF HOSPITALS AND CLINICS** We look at what companies are doing to work and be competitive and see which ones are doing it best. We then strategize using intelligent tools and global resources to understand the implications of every choice our clients may make. Contact us to find out more about how this service can help you. **COMPANY SECURITY MANAGEMENT SYSTEMS SPECIALISTS** • Company safety in the workplace D.lgs. 81/08 and subsequent amendments - ISO 45001:2018 • Data and information security Reg.(EU) 2016/679 – ISO 27001:2017 **FIRST, SECOND AND THIRD PARTY COMPANY MANAGEMENT SYSTEM AUDITORS (\*) AUDITORS** registered in the Professional Register of CONF.E.P.I. association recognized in aggregative form to the Ministry of Economic Development (MISE) pursuant to article 8 paragraph 2 of Law 4 / 2013 "Provisions concerning unorganized professions" **DESIGN, DEVELOPMENT AND IMPLEMENTATION OF FOOD AND BUSINESS MANAGEMENT SYSTEMS LOGISTICS** • IFS Food & Logistics • BRS Food & Logistics



# A "Neural" network at the service of the institutions

**Worldwide  
Agency for  
Institutional Affairs**  
We return the complexity at the problems

## **Worldwide Energy & Environment**

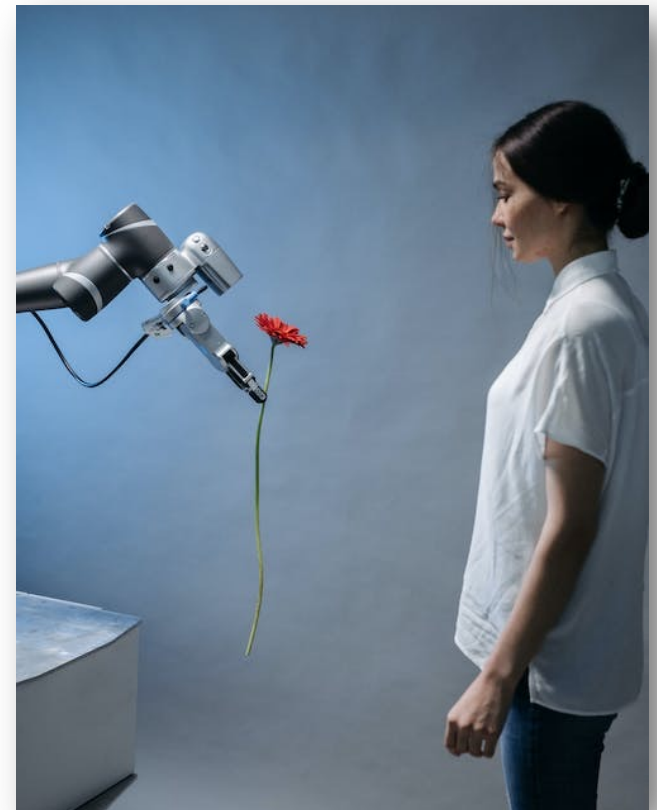
Preserve energy & environment  
for the future generations

- Provides services related to energy efficiency, renewable energy, and sustainable construction.
- Develops customized software solutions for energy management, monitoring, and reporting.
- Offers legal advice and support related to environmental regulations and compliance.

## **Worldwide Artificial Intelligence Development Unit**

We humanize the thinking of A.I.

A unit dedicated to the use of artificial intelligence to support and develop projects in the field of research at 360°. Our research team is using AI both in protocol development and in predictive analyzes in the technical and scientific fields.





# A "Neural" network at the service of the institutions

**Worldwide  
Agency for  
Institutional Affairs**  
We return the complexity at the problems

CENTRI DI  
FORMAZIONE  
ACCREDITATO



Exemplar  
Global

**Worldwide Competence  
Training Center** (Acc.n.02.2021)

**WorldWide Training  
Aid Agency**

Professional training center dedicated to providing professionalizing solutions and therefore job opportunities to those who attend them.

Each course is carried out in a UNI CEI EN ISO/IEC 17024 accredited environment "General requirements for bodies that carry out the certification of people".

Every professional figure who leaves the courses is registered in the List Law 4/2013 on unrecognized professions and for which CONF.E.P.I. is one of the managers of the Lists authorized by the MISE.

Identification of specific training solutions for personnel responsible for protecting company activities in crisis areas, also in collaboration with private security & defense agencies.

Training of personnel in charge of intervening both for recovery activities and for first aid health emergency activities.

Training of personnel in charge of the integrated management of the security of company sites from both a managerial and relational point of view

Preliminary analyzes on critical scenarios for the identification of safety procedures to be implemented in a preventive manner

Preparation of emergency projects ready to be financed and operational (See AID Afghanistan 2021 project)



# Our Company Certifications in support of the Expert

Worldwide  
Agency for  
Institutional Affairs  
We return the complexity at the problems

- ISO 9001:2015 Quality Management System Certification - Quality Management Systems for the following scope: Management consultancy - Management and planning control - Design and implementation of management and planning, control models in micro, small and medium-sized enterprises
- ISO 21001:2019 System Certification - Management systems for education and training organizations for the following purpose: corporate health training in emergency and non-emergency areas
- UNI EN 16775:2016 System Certification Appraisals - General requirements for appraisal services
- ISO 20700:2018 System Certification Management consulting services (management consulting)
- UNI/TR 11594:2015 System Certification Management consultancy - Management and planning control - Design and implementation of management and planning control models in micro, small and medium-sized enterprises (SMEs)



# What we can do for Public Companies

**Worldwide**  
Agency for  
**Institutional Affairs**  
We return the complexity at the problems

Consultancy for the strategic development of plans in the industrial, commercial, health, safety and research fields.

Consulting for the strategic development of eco-sustainability plans.

Consultancy for the strategic development of plans for the reconstruction and/or reconversion of the internal market, from the industrial to the healthcare one.

Consultancy for the strategic development of business networks and interconnection between companies in the EU and outside the EU.

Consulting for the development and maintenance of management plans for public agencies or agencies of public interest.

Qualification of managerial staff.



# A «Bespoke» service

**Worldwide**  
Agency for  
Institutional Affairs  
We return the complexity at the problems

Our teams are able to "tailor" the service or services, consulting on the specific needs of public administrations.

All integrated with the national geopolitical and economic aspects, also considering those relating to the possibility of accessing EU or World Bank funds.



**Banca europea  
per gli investimenti**





# Contact

**Worldwide**  
Agency for  
Institutional Affairs  
We return the complexity at the problems



COO – Guido Palchetti  
[coo.worldwide@gmail.com](mailto:coo.worldwide@gmail.com)



Public Affairs Consultant -  
Pierangelo Panozzo  
[gebrauchtwm@gmail.com](mailto:gebrauchtwm@gmail.com)

COMPETENCES AT SERVICES OF  
CLIENT NEEDS  
[www.worldwideurope.com](http://www.worldwideurope.com)